



2009



QUICK CHANGE REAR ENDS

Contact Information

Shipping Address:
105 Industrial Drive
Valencia, PA 16059

Phone:
724-898-2111

Mailing Address:
PO BOX 427
Saxonburg, PA 16056

Fax:
724-898-3022

Web:
www.franklandracing.com

Toll Free:
1-888-8-REAR-END
1-888-873-2736

Email:
info@franklandracing.com

Frankland Racing Supply is Located in western Pennsylvania.



Contents

Racing Industry Rears

Closed Tube Application

Frankland Superlite	2-5
Centers and Side Bells	7-9
Tubes	10
Close Tube Part	6
Differentials	11
Hubs.....	12-13
Axles	6
Brakes	14

Open Tube Application

Frankland Live Axle	15-19
Centers.....	17
Side Bells and Accessories	20
Sprint Kits	17
Overhaul Kits	21
New Generation Shifter Assemblies.....	22
First Generation Assemblies	23
Axles	20

All Other Parts

Pinion Assemblies	24
Ring and Pinion.....	25
Rear Covers	26-27
Gears	28-29
Miscellaneous Parts.....	30
Winters® Replacement Parts	31
Tech Tips	32-36



Closed Tube *Superlites*

The **Frankland Superlite** Rear is the best in the industry. Just ask around. Mark Richards says “Frankland has the best rear in the industry” The top dirt drivers run our products Josh Richards, Chub Frank, Clint Smith and many more. With fewer failures our rear will keep you on the track. Our courteous sales staff will help you with all your rear end needs.

The Difference

The superlite rear has been in development for over 30 years. It has evolved into a lightweight and durable quickchange rear end. Our rear will save you time and money.

Low Drag

Those looking to gain more horsepower. Try our Low Drag options. We have tested our low drag rear against the competition and our rear pulls 5% less power.



Closed Tube Options

Frankland 01 Frankland Superlite Rear End Assembly Magnesium
 Frankland 05 Frankland Original Rear End Assembly Magnesium

Assembly Includes:

- Solid Heat Treated Lower Shaft
- 4.11 or 4.86 Ring and Pinion
- Aluminum Spool
- Posi-Lock

Axle Tube Options (Priced Per Set)

One Piece Wide 5 Aluminum Tube	280.00
Cambered (Steel-G.N., Howe, Wide 5)	310.00
Steel Fabricated (G.N., Howe, Wide 5)	175.00
Chrome Moly (G.N., Howe, Wide 5)	210.00
8-Bolt Steel	175.00
8-Bolt Aluminum	340.00
Big Bearing Ford	210.00

Axle Options (Priced Per Axle)

Solid Wide-5	90.00
Gundrilled Wide-5	125.00
Grand National Gundrilled	130.00
Grand National Solid	90.00
Dutchmen Flanged Axles (Call for Details and Pricing)	

Differential Options (Add these prices to Assembly price)

Torsen Gleason	1150.00
Black Gold Track	750.00
Detroit Locker Aluminum	575.00
Diamond Track	695.00
Light Weight Locker	725.00

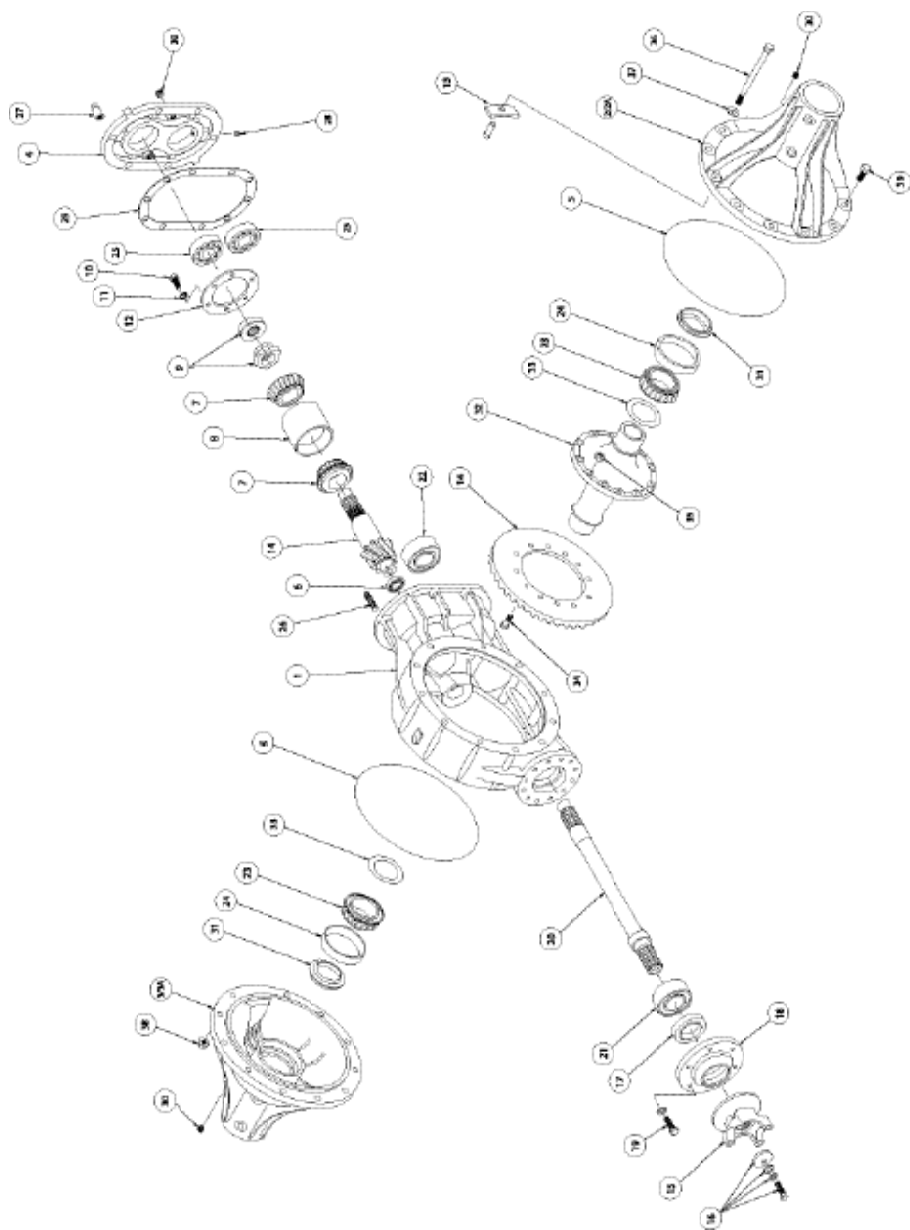
Available Options (Add these prices to Assembly price)

Super Cover for Frankland Original	105.00
Aluminum Yoke	95.00
Thermal Coating	140.00
Gundrilled Lower Shaft	50.00
Tubular Through Bolts	65.00
Roller Pinion Nose Bearing	16.00
Aluminum Pinion Lock Ring	15.00
H.D. Cover Bearings	28.00
REM Coating	225.00
Billet Rear Cover w/Heavy Duty Bearings	70.00
Light Weight Ring Gear	140.00
LD Tube Seals	
Col Fill Plugs	16.00
300M Lower Shaft	170.00
Seal Plate	45.00
Site Plug Rear Cover	

Superlite Parts

1	Center Section Nose Bearing Magnesium	QC0014-MN	470.00
2	Left Side Bell 8 Rib	QC0253-ML	214.00
2A	Left Side Bell 6 Rib	QC0254M	211.00
	Left Side Bell 6 Rib (coated)	QC0254MC	231.00
3	Right Side Bell 8 Rib	QC0253-MR	204.00
3A	Right Side Bell 6 Rib	QC0255M	185.00
	Right Side Bell 6 Rib (coated)	QC0255MC	231.00
4	Superlite Rear Cover	QC0840M	91.30
5	Seal O-Ring S/L and Frankland III	QC0275	5.50
6	Bearing Pinion Nose Bearing	QC0160	8.40
7	Pinion Bearing	QC0200	16.80
8	Pinion Bearing Carrier	QC0203	49.00
9	Pinion Nut L.H. Spread Bearing Posi Lock	QC0214A	40.00
10	Pinion Lock Plate Bolt	QC0108	.50
11	3/8 Lock Washer	QC0100	.15
12	Pinion Lock Plate Steel	QC0060	11.75
13	Thrust Block and Pin	QC0310	9.00
14	4:86 R&P Original	QC0182	250.00
15	Yoke	QC0380	41.00
16	Yoke Bolt & Washer	QC0381	3.50
17	Front Yoke Seal	QC0150	6.25
18	Front Seal Plate	QC0140	39.00
19	3/8 x 16 x 1 1/4 Bolt Aluminum	QC0109A	.55
20	Lower Shaft - PreHardened	QC0400SPH	89.00
21	Sprint Input Shaft Bearing	SP0017	19.50
22	Sprint Output Shaft Bearing	SP0018	18.25
23	Carrier Bearing	QC0290	22.00
24	Carrier Bearing Race	QC0280	9.95
25	Rear Cover Bearing	QC0090	8.50
26	Rear Cover Stud	QC0121	.75
27	Rear Cover Nut	QC0122	3.75
28	Rear Cover Bearing Lock Screw	QC0117	.35
29	Rear Cover Gasket	QC0815	2.50
30	Pipe Plug 3/8 Aluminum	QC0321-A	2.00
31	Axle Tube Seal	QC0300	5.00
32	Spool	QC0432	205.00
33	Shim Kit	KT0445	6.00
34	Ring Gear Bolt	QC0307	1.00
35	Ring Gear Nut	QC0103	.35
36	Through Bolt	QC0306	1.50
37	7/16 Washer	QC0302	.35
38	7/16 Nut	QC0306	1.50
39	7/16 x 14 x 1 1/4" Bolt	QC0305	.55

Superlite Exploded



Closed Tube Parts



KT0099

Yokes

QC0380	Yoke	50.49
QC0381	Yoke Bolt and Washer	4.50
QC0382	Yoke Aluminum	159.00
QC0384	Yoke Spacer	8.50
KT029428X	U Bolts for Quick Change	12.00
KT0099	Seal Plate with Bolts Aluminum	53.00
QCO130	Yoke Seal Non-Quick	5.25
QC0140	Seal Plate Open Drive	39.00
QC0150	Seal Front Yoke Open Drive	6.25
QCO150W	Yoke Seal Winters®	9.50
QC0150W-LD	Low Drag Yoke Seal	11.50



KT029428X



QC0381

Lower Shafts

QC040SPH	Lower Shaft Solid	95.00
QC0420GD	Lower Shaft GunDrilled	155.00
QC0400-300M	Lower Shaft Severe Duty	295.00

Lower Shaft Bearings

QC0030	Rear Bearing Lower Shaft (Single Row)	14.00
QC0031	Rear Lower Shaft Bearing	24.50
QC0031S	Front Lower Shaft Sealed Bearing	25.00
SP0017	Front Lower Shaft Bearing for Nose Bearing Centers	19.50
SP0018	Rear Lower Shaft Bearing for Nose Bearing Centers	18.25



QC0380

*Specify your center section when ordering bearings

Closed Tube Axles



QC0150WHD

QC0900	Axle Solid	93.00
QC0910	Axle GunDrilled	143.00

Custom Lengths Available Please Call For Information

* Please Specify Length when ordering.



QC0150W



QC0130

Solid Axle Lengths Available	
26"	33"
26 1/2"	33 1/2"
27"	34"
27 1/2"	34 1/2"
28"	35"
28 1/2"	35 1/2"
29"	36"
29 1/2"	36 1/2"
30"	37"
30 1/2"	37 1/2"
31"	38"
31 1/2"	39"
32"	39 1/2"
32 1/2"	40"
	40 1/2"

GunDrilled Axle Lengths Available	
26"	34 1/2"
27"	35"
28"	35 1/2"
29"	36"
30"	36 1/2"
30 1/2"	37"
31"	37 1/2"
31 1/2"	38"
32"	39"
32 1/2"	39 1/2"
33"	40"
33 1/2"	40 1/2"
34"	41"
	41 1/2"



QC040SPH

Closed Tube Centers



Center Sections

QC0014A	Superlite Center Aluminum	409.00
QC0014MN	Superlite Center Mag with Nose Bearing	470.00
QC0014MNC	Superlite Mag Thermal Coated with Nose Bearing	525.00

Winters® Replacement Centers

QCW0014M	Winters® Replacement Center Section Magnesium	470.00
----------	---	--------

Sidebells and Accessories

Superlite Side Bells

QC0253AL	Superlite Bell Aluminum Left	185.00
QC0253AR	Superlite Bell Aluminum Right	185.00
QC0253ML	Superlite Left Bell Magnesium 8 Rib	204.00
QC0253MLC	Superlite Left Bell Magnesium Coated 8 Rib	234.00
QC0253MR	Superlite Right Bell Magnesium 8 Rib	185.00
QC0253MRC	Superlite Right Bell Magnesium Coated 8 Rib	234.00

Superlite Side Bells

QC0254M	Superlite Left Bell Magnesium 6 Rib	185.00
QC0254MC	Superlite Left Bell Magnesium 6 Rib Coated	231.00
QC0255M	Superlite Right Bell Magnesium 6 Rib	185.00
QC0255MC	Superlite Right Bell Magnesium 6 Rib Coated	231.00

Seals, gaskets, bolts, accessory kits

QC0270	Seal O-Ring Original/Sprint	4.75
QC0275	Seal O-Ring S/L and Frankland III	5.50
QC0280	Bearing Carrier Race	9.95
QC0300	Seal Axle Tube	5.00
QC0310	Thrust Block and Pin	9.00
QC0321	Pipe Plug 3/8	.45
QC0321A	Pipe Plug 3/8 Aluminum	2.00



QC0270 QC0275



QC0253ML



QC0254MC



QC0300



QC0253MRC



QC0255MC



QC0310

Closed Tube Center & Side Bell Kits



Center Kits

Kit Includes all components minus differential, axle tubes and side bells

KT0010	Original Center Aluminum	Call For Pricing
KT0010M	Original Center Magnesium	Call For Pricing
KT0014A	Superlite Center Aluminum	Call For Pricing
KT0014M	Superlite Center Magnesium	Call For Pricing
KT0014MC	Superlite Center Thermal Coated Magnesium	Call For Pricing
KT0014MN	Superlite Center Nose Bearing Magnesium	Call For Pricing
KT0014MNC	Superlite Center Thermal Coated with Nose Bearing	Call For Pricing

Side Bell Kits

Kit includes tube, sidebell, race, o-ring and seals

KT0254M	Superlite 6 Rib Left Side Bell Loaded	225.00
KT0254M	Superlite 6 Rib Left Side Bell Loaded Coated	270.00
KT0255M	Superlite 6 Rib Right Side Bell Loaded w/o Sight Plug	225.00
KT0255M	Superlite 6 Rib Right Side Bell Loaded w/o Sight Plug Coated	270.00

Not Enough Time to Rebuild your Rear? Call Frankland at 1-888-873-2736. Have the professionals at Frankland install a new center kit. Our fast, friendly and reliable service will rebuild all makes and models of rear ends.

Overhaul Kits



Overhaul Kits

All overhaul kits include bearings, seals, o-rings and races to rebuild your center.

KT0106	Overhaul Kit for Original with Regular Cover	258.00
KT0107	Overhaul Kit for Original with Super Cover	305.00
KT0108	Overhaul Kit for Frankland III with Regular Cover	230.00
KT0109	Overhaul Kit for Frankland III with Super Cover	248.00
KT0111NB	Overhaul Kit Superlite with Nose Bearing	270.00

Sample Kit Includes

KT0111NB Overhaul Kit Superlite with Nose Bearing

QC0442	Spool Shim .025
QC0439	Spool Shim .005
QC0440	Spool Shim .007
QC0441	Spool Shim .012
SP0017	Sprint Input Shaft Bearing
SP0018	Sprint Output Shaft Bearing
QC0090	Bearing Rear Cover
QC0150	Seal Front Yoke (Open Drive)
QC0200	Bearing Pinion Carrier Bearing
QC0275	Seal O-Ring S/L and III
QC0290	Bearing Carrier
QC0300	Seal Axle Tube
QC0310	Thrust Block and Pin
QC0815	Seal Rear Cover Gasket
QC0203	Pinion Race S/L Sprint
QC0280	Bearing Carrier Race
QC0160	Bearing Pinion Nose Narrow
QC0214A	Posi-Lock Nut Aluminum

Tech Tip:

The difference between left and right side bell is that the left bell is machined to fit the thrust block pin.

Tubes



QC0261

Grand National

QC0261	Grand National Tube Fab Steel	102.00
QC0261-05	Grand National Tube .5 Degree	172.00
QC0261-10	Grand National Tube 1 Degree	172.00
QC0261-1.5	Grand National Tube 1.5 Degree	172.00
QC0261L	Grand National Tube Fab Steel LFT Threads	102.00
QC0261L-05	Grand National Tube .5 Degree LFT Threads	172.00
QC0261L-10	Grand National Tube 1 Degree LFT Threads	172.00
QC0261L-15	Grand National Tube 1.5 Degree LFT Threads	172.00
QC0261L-S	Grand National Snout Left Hand	38.50



QC0261L-05



QC0261-S

QC0261-S	Grand National Snout Right Hand	38.50
QC0263-B	Axle Tube Baby Grand Steel	99.00



QC0262-S

Howe

QC0262	HOWE Tube Fab Steel	102.00
QC0262-S	HOWE Snout	45.00
QC0262-05	HOWE Tube .5 Degree	172.00
QC0262-10	HOWE Tube 1 Degree	172.00
QC0262-15	HOWE Tube 1.5 Degree	172.00
QC0262-20	HOWE Tube 2 Degree	172.00
QC0263	Wide 5 Fab Steel	99.00
QC0263-05	Wide 5 .5 Degree	172.00
QC0263-10	Wide 5 1 Degree	172.00
QC0263-15	Wide 5 1.5 Degree	172.00
QC0263-M5	Mini 5 Fab Steel	99.00
QC0263-S	Wide 5 Snout	39.50
QC0263C	Wide 5 Tube Chrome Moly 1/8 Wall	150.00
QC0264	One Piece Aluminum Wide 5 Axle Tube + Length	199.00
QC0265S	8 Bolt Tube End	52.00
QC0266	Axle Tube 8 Bolt Aluminum	195 -225.00
QC0269	Snout 8 Bolt Steel Wide 5 Snout	90.50
QC0268	8 Thin Flange	230-235.00



QC0263



QC0263-05



QC0263C



QC0264



QC0265S

Tube Accessories

QC0300	Axle Tube Seal	6.00
TT4500-W	Seals It Tube Seal (2.500 O.D.) (steel or aluminum)	52.00
TT4625	Seals It Tube Seal (2.625 O.D.) (steel or aluminum)	52.00
QC0300LD	Low Drag Tube Seals	14.50

**When ordering please specify length*

Tech Tip: How To Measure Tube Length? Measure tube end to end. Note: 5" of material goes into the side bell

Differentials



QC0432	Spool Aluminum	235.00
KT0432	W/Bearings and Shims	280.00



QC0450	Torsen Gleason	1270.00
KT0100	W/Bearings and Shims	1295.00



QC0448	Diamond Track	825.00
KT0448	W/Bearings and Shims	865.00

QC0433	Detroit Locker Aluminum	650.00
KT0433	W/Bearings and Shims	680.00



QC0461	9" Ford Torsen Gleason	1195.00
--------	------------------------	---------

DPI125034T	Black Gold Track	825.00
------------	------------------	--------



QC0433LW	Liteweight Locker	750.00
----------	-------------------	--------



KT0125034T	W/Bearings and Shims	865.00
------------	----------------------	--------

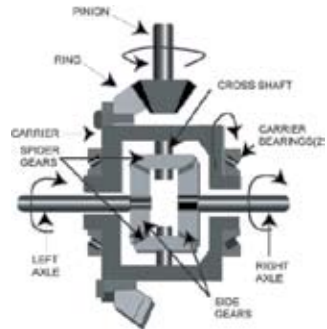
Accessories and Kits

KT0445	Differential Shipm Kit	7.00
--------	------------------------	------



How Differentials Work

Automotive differentials, devices that allow one drive wheel to turn faster than the other when the car is cornering, are necessary in passenger cars and trucks. During cornering, the outside wheel follows a larger radius than the inside wheel and therefore travels a greater distance. Differentials allow one drive wheel to speed up while the other one slows down by the equal amount. This differential action is accomplished by interconnecting the inboard ends of the two axles with a series of gears. The most common type of differential is the simple open differential.



Gleason Notables:

- 1.) If your rear end application utilizes threaded ring gear bolts they should not protrude more than one thread through the ring gear.
- 2.) Frankland Originals must use a single row pinion support bearing (QC0170) for clearance purposes.

Hub Accessories



RH0001



RH0003



FPH54



FPH5ST-GD



RH0001S



FPH5RING1 & FPH5FCAP

Frankland Wide 5 Accessories

FPH5-B1	Hub 7/16 x 14 x 2 1/4 SS Drive Flange Stud	2.15
FPH5-N1	Hub 14 Nylock- Drive Flange Nuts	.35
FPH5-W1	Hub 7/16 Small Od Washer	.25
FPH5RING1	Hub Cap O-Ring 3/16 - 2 7/8 ID 66892	2.50
FPH5FCAP	Hub Cap For Front (Purple, Gold & Black)	27.50
FPH54	Hub Wide 5 Seal(rubber coated)	8.50
FPH5STKIT	Hub Wide 5 Stud Kit For Hubs	15.00
FPH5ST	5/8 x 2 1/4 Stud	3.99
FPH5ST-GD	Hub Stud 5/8 x 2 1/4 GunDrilled	6.50
KT0140	Drive Flange Stud Kit	20.00
KT0141	Rotor Stud Kit	7.50
KT0270	Wide Five Hub Kit Bearing Assembly	29.95
QC0930	Drive Flange Aluminum	47.00
QC0935	Drive Flange 5 Bolt	47.00
RH0004	Wide 5 Outer Hub Race	5.99
RH0005	Wide 5 Outer Hub Bearing	9.75
RH0006	Wide 5 Inner Hub Race	5.95
RH0007	Wide 5 Inner Hub Bearing	10.00
RH0009	Spindle Lock Washer	2.10
RH0010	Wide 5 Nut	3.90
RH0012	Wide 5 Hub Seal	21.00
RH0014A	Front Hub Dust Cover Aluminum	5.60
RH0014S	Front Hub Dust Cover Steel	4.25
RH0001	Lug Nut Aluminum	2.20
RH0001S	Lug Nut Steel LEF0832084	1.50
RH0002	Wide 5 Spindle Nut Aluminum	7.50
RH0002-LW	Wide 5 Spindle Lock Washer	3.50
RH0002-S	Wide 5 Spindle Locking Screw	.99
RH0002-W	Wide 5 Spindle Washer	2.50
RH0003	Wide 5 Hub Seal	5.50
KT0270-LD	Angular Contact W-5 Bearings	79.00
KT0270	W-5 Bearing Assy. Standard	29.95
KT0270-REM	W-5 Bearing ASSY REM Polish	70.00

Grand National

GN210-K	Grand National Steel Hub Kit	179.00
GN0009	Grand National Hub Race	11.50
GN0060	Grand National Snout Nut Right	11.99
GN0070	Grand National Snout Nut Left	20.49
GN0080	Grand National Snout Nut Lock	4.49
GN0100	Grand National Hub Bearing	24.05
GN0110	Grand National Hub Seal	8.00
GN0140	Grand National Outer Snout Seal	6.25

Hubs

Frankland Wide 5 Hubs

FPH5F	Hub Wide 5 Front Assembly	170.00
FPH5FC	Hub Wide 5 Front Assembly Coated	195.00
FPH5FCL	Hub Wide 5 Front Assembly Coated w/Drilled Studs	210.00
FPH5LN	Hub Wide 5 Aluminum Wheel Nut Assembly	12.35
FPH5FLW	Hub Wide 5 Front Assembly w/Drilled Studs	193.00
FPH5R	Hub Wide 5 Rear Assembly	175.00
FPH5RC	Hub Wide 5 Rear Assembly Coated	210.00
FPH5RCL	Hub Wide 5 Rear Assembly Coated w/ Drilled Studs	215.00
FPH5RLW	Hub Wide 5 Rear Assembly w/ Drilled Studs	193.00
FPH5-5R	Hub Wide 5 Rear 5 Bolt Assembly	170.00
FPH5-5RC	Hub Wide 5 Rear 5 Bolt Assembly Coated	195.00
FPH5-5RD	Hub Wide 5 Rear 5 Bolt w/ Drilled Studs	193.00
FPH5-5CD	Hub Wide 5 Rear 5 Bolt Coated w/ Drilled Studs	215.00

Wide Five

WIL270-1956	Wilwood Hub - 8 Bolt	86.50
WIL270-6735C	Wilwood 5 Star Front with Cap	124.50
WIL270-6513C	Wilwood 5 Star Rear	96.50
WIL270-6735D	Wilwood 5 Star Front w/ Cap Drilled Studs	140.50
WIL270-6513D	Wilwood 5 Star Rear w/ Drilled Studs	112.50



FPH5FC & FPH5RC



FPH5F & FPH5R



KT0270



KT0140



QC0930



QC0935

Tech Tip:

When using magnesium hubs prevent excessive wear to drive flange threads using Frankland's drive flange stud kit (KT0140)

Closed Tube Brakes and Accessories



TBM7-0577

TBM7-0577-12	Brake Fluid	9.50
TT4500-W	Seals it Tube Seal	52.00
TT4625	Seals it Tube Seal	52.00
WIL15B-3992K	Brakepad Polymatrix Set Black	84.60
WIL15D4332K	Brakepad Wilwood, 7320D, SL Polymatrix Set	61.40
WIL160-0471	Rotor .810 LM 11.75 8 on 7"	41.35
WIL160-0843	Rotor 1.25 LM 11.75 8 on 7"	34.00
WIL160-5864	Rotor 1.25 LM 11.75 8 on 7"	49.95
WIL160-2898	Rotor 1.25 RT 11.75 8 on 7"	48.75
WIL160-2899	Rotor 1.25 LT 11.75 8 on 7"	48.75



WIL160-2898



WIL160-2899



WIL160-0471



WIL120-3191

WIL15B-3992K



Tech Tip:
 When using curved vane rotors be sure to have the directional fins rotating properly. They are marked with R and L

Open Tube Rears

The **Frankland Live Axle Rear End** has revolutionized the sprint car market by becoming the strongest in the industry. Frankland took the initiative to solve the problems that were common to the live axle rear ends of that time. The innovated design of the right side bell cast as an integral part of the center section added strength to the nose area and extended the life of the ring and pinion by decreasing the flexing of the center section and side bell. This rear end is strong, to prove it, the center section is guaranteed for a year against breakage. With additional lightweight options, this rear end can also become the lightest in the industry.



Open Tube Options

Frankland 02 Frankland Live Axle Rear End Assembly Magnesium 1495.00

STD Assembly Includes

- Integral Center Magnesium (1 year guaranteed)
- Heat Treated and Gundrilled External L. Shaft
- Short Spline Axle with Brake Spline
- Choice of 4.12 or 4.86 Ring and Pinion
- Pos. Lock Pinion Nut
- Std. Length Aluminum Axle with Brake Spline

Available Options

- | | |
|--------------------------|--------|
| • Long Spline | 45.00 |
| • Lightweight Axle | 75.00 |
| • Specialty Axle | 175.00 |
| • Thermal Coating | 140.00 |
| • Internal Coupler Steel | 60.00 |
| • Aluminum Lock Ring | 15.00 |
| • Titanium Studs | 95.00 |
| • Scalloped Ring Gear | 140.00 |
| • 1pc. Brake Hub | 145.00 |
| • Shifter Bracket | 10.50 |
| • H.D. Cover Bearings | 28.00 |
| • Roller Nose Bearing | 16.00 |
| • Ball Spline | 200.00 |
| • TI Lower Shaft | 300.00 |

Open Tube Centers



SP0014MN	Sprint Center with Nose Bearing	540.00
SP0014MNC	Sprint Center with Nose Bearing Thermal Coated	638.00
Winters® Replacement Centers		
SPW0014M	Winters® Replacement Center	545.00

Sprint Kits

SP0046-LOCK	Shifter Handle and Cable	155.00
KTSP0047	Shifter Bracket kit	19.50
SP0047	Sprint Shifter Cable Bracket	14.00
QC0121	3/8 Cover Stud S/L - Sprint	2.00
QC0101HD	3/8 Flat Washer Grade 9 Zinc	.45
KT0060	Steel Lock Plates with Steel Bolts	15.50
KT0060A	Lock Plate with Alum Bolts	33.00
KT0104	Sprint Shim Kit	15.50
SP0046QR	10/32 female to 1/4-28 ball stud quick release	9.55



SP0046-LOCK



SP0046QR



KTSP0021B



KTSP0047

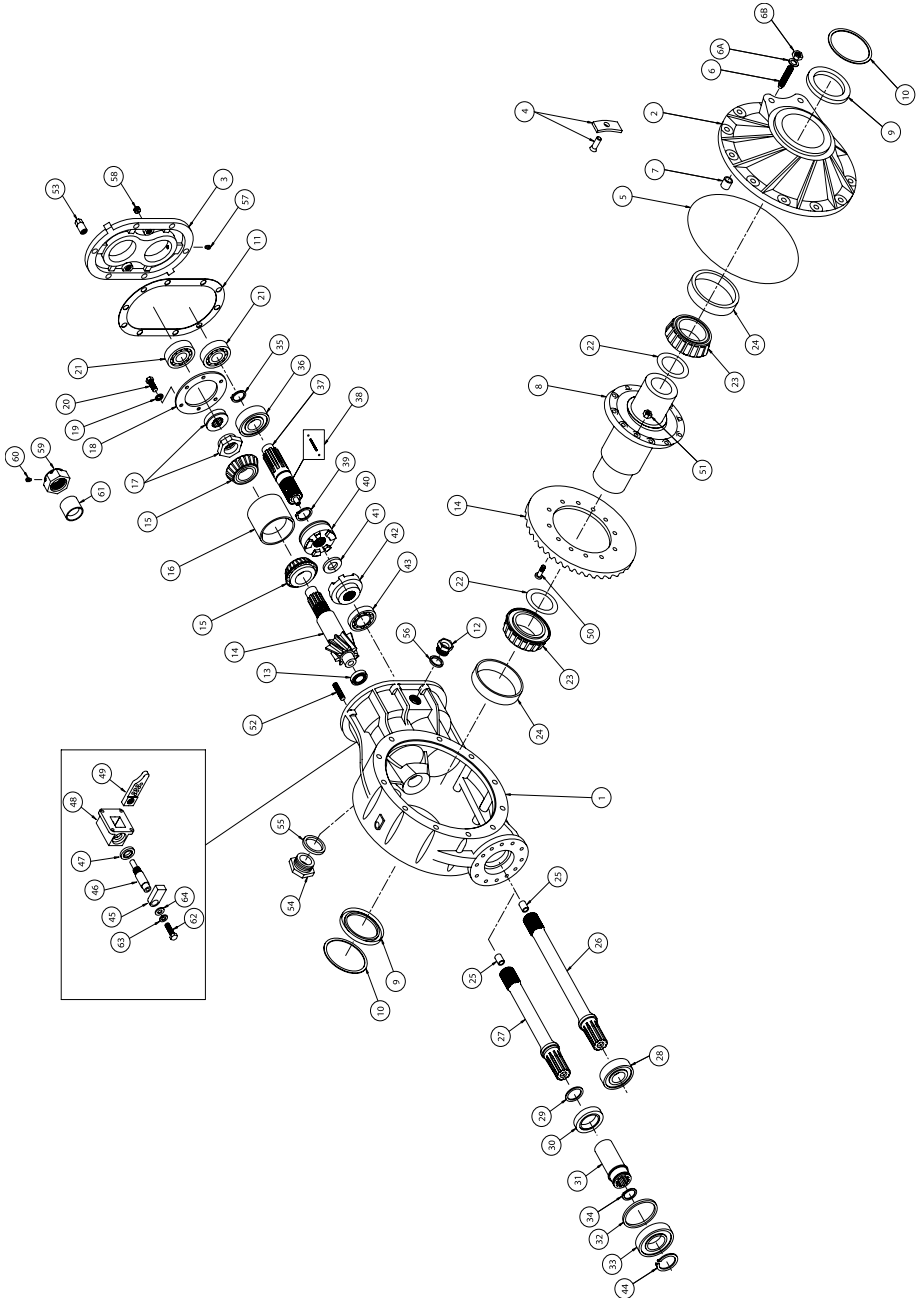


KT0104

Open Tube Parts

1	Sprint Center Section with Nose Bearing	SP0014MN	540.00
2	Sprint Side Bell	SP00253M	215.00
3	Sprint Rear Cover	QC0840M	91.30
5	Seal O-Ring Original Sprint	QC0270	4.75
6	Sprint Pinion Thrust Set Screw 1/2 x 13	SP0311	10.00
6a	Sprint Pinion Thrust Washer	SP0313	.40
6b	Sprint Pinion Thrust 1/2 Nut	SP0312	2.50
7	Sprint Pinion Thrust Stop Block (w/o for SP0310)	SP5008	9.95
9	Sprint Axle Seal	SP0005	9.95
10	Sprint Axle Seal Lock Ring	SP0006	2.25
11	Rear Cover Gasket	QC0815	2.50
12	Sprint Filler Plug	SP0037	13.50
13	Bearing Pinion Nose Bearing Narrow	QC0160	8.40
14	4:86 R&P Spread Bearing	QC0184	265.00
15	Bearing Pinion Carrier Bearing	QC0200	16.80
16	Pinion Race S/L Sprint	QC0203	49.00
17	Posi Lock Pinion Nut	QC0214A	40.00
18	Pinion Lock Plate	QC0060	11.75
19	3/8 Lock Washer	QC0100	.15
20	3/8 x 16 x 1 Bolt	QC0108	.50
21	Rear Cover Bearing	QC0090	8.50
22	Sprint Shim Kit	KT0104	14.50
23	Bearing Carrier	SP0003	29.50
24	Bearing Carrier Race	SP0004	13.00
25	Input Shaft Bushing	SP1216	3.75
26	Sprint Input Shaft	SP1207	105.00
27	Sprint Input Shaft Internal Dog Ring	SP1207I	97.30
28	Sprint Input Shaft Bearing	SP0017	19.50
29	Sprint Filler Plug	SP0037	.95
30	Sprint Internal Coupler Seal	SP0101S	5.50
31	Sprint Internal Coupler Steel With Snap Rings	SP0101	49.00
32	Sprint Internal Spacer Ring	SP0101SR	9.00
33	Sprint Internal Coupler Bearing	SP0017I	17.50
34	Sprint Internal Coupler Snap Ring Small	SP0101-S	1.25
35	Sprint Retaining Clip for Output Shaft Dog Ring	SP1238	2.75
36	Sprint Output Shaft Bearing	SP0018	18.25
37	Sprint Output Shaft Dog Ring	SP1208	74.50
38	Sprint D-Tent Spring Dog Ring	SP1220	4.00
39	Sprint Output Retaining Ring Inner	SP1238	2.75
40	Sprint Output Shifter Ring	SP1209	50.00
41	Sprint Shifter Washer-Bronze	SP1205	7.00
42	Sprint Input Shifter Ring	SP1206	52.50
43	Sprint Output Center Bearing Dog Ring	SP1219	29.50
44	Internal Coupler Snap Ring Large	SP0101-SR	1.40
45	Sprint Shifter Link Aluminum	SP0014	16.50
46	Sprint Shifter Shaft Aluminum	SP1213A	15.00
47	Sprint Shifter Seal	SP0012	3.85
48	Sprint Shifter Housing Dog Ring	SP1211	52.50
49	Sprint Shifter Actuator Dog Ring	SP1215	25.50
50	Ring Gear Bolts	QC0307	1.00
51	3/8 38 x 24 Nylock Nuts	QC0103	.35
52	3/8 Cover Stud S/L S/P	QC0121	.29
53	Rear Cover Nut S/L S/P Aluminum	QC0122	3.75
54	Sprint Sight Plug Aluminum	SP0031	21.00
55	Sprint Sight Pulg "O" Ring	SP0031-0	1.35
56	"O" Ring For Filler Plug/and for Internal Coupler	SP0037-0	.95
57	1/4 x 20 x 5/16 Half Daug Set Screw	QC0117	
58	Pipe Plug 3/8	QC0321	.45
62	3/8 x 243/4 Bolt	QC0104	.45
63	3/8 Lock Washer	QC0100	.15
64	3/8 Flat Washer	QC0101	.15

Open Tube Exploded



Open Tube Axles



Available in Black, Purple and Red



FP6100 & FP6101

Axles

SP0001	Axle Short Spline Regular	750.00
SP00012	Axle Long Left Side Lightweight	650.00
SP0002	Axle Long Spline Regular	785.00
SP0002-2	Axle Long Spline Left Side	650.00
SP0002AVENG	Axle Long Spline Avenger	825.00
SP054-4	Sprint Axle 4" Offset Silver Crown with 1.75 Bore	825.00



SP0023A

Axle Accessories

FP6100	Sprint Axle Nut (Aluminum) Right	22.50
FP6101	Sprint Axle Nut (Aluminum) Left	22.50
SP0023A	Sprint Magnesium Brake Rotor Hub One Piece	135.00
FP6200	Sprint Axle Nut (MAG) Right	59.00
FP6201	Sprint Axle Nut (MAG) Left	59.00

Open Tube Side Bells



SP00253M

Sidebells

SP00253M	Sprint Side Bell	215.00
SP00253M-C	Sprint Side Bell Thermal Coated	250.00
KTSP00253M	Sprint Side Bell Kit	245.00
KTSP00253M-C	Sprint Side Bell Kit Thermal Coated	270.00
SP0005	Sprint Axle Seal	9.95
SP0006	Sprint Axle Seal Lock Ring	2.25
SP0310	Sprint Pinion Thrust Stop Block Kit	21.80



SP00253MC

Winters® Side Bells

SPW0005	Winters® Bell Seal	4.15
SPW00253M	Winters® Sprint Side Bell	175.00
KTSPW00253M	Winters® Sprint Side Bell Conversion Kit	245.00



SP0005 & SP0006



SP0310

Open Tube Overhaul Kits



Overhaul Kits

All overhaul kits include bearings, seals, o-rings and races to rebuild your center.

KTSP003	Sprint Overhaul Kit External Shaft (First Generation)	320.00
KTSP003I	Sprint Overhaul Kit Internal Shaft (First Generation)	275.00
KTSP123	Sprint Overhaul Kit External Shaft (New Generation)	285.00
KTSP123I	Sprint Overhaul Kit Internal Shaft (New Generation)	345.00

Sample Kit Includes

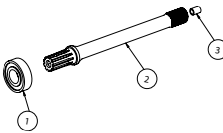
KTSP003	Sprint Overhaul Kit External Shaft
SP0017	Sprint Input Shaft Bearing
SP0018	Sprint Output Shaft Bearing
SP0009	Sprint Snapping Lower Output
SP0019	Sprint Input Shaft Housing Bearing
SP0003	Sprint Carrier Bearing
SP0004	Sprint Carrier Race
SP0005	Sprint Axle Seal
SP0006	Sprint Axle Seal Lock Ring
QC0090	Bearing Rear Cover
QC0270	Seal O-Ring Original Spring
SP0313	Sprint Pinion Thrust Stop Block
SP0022	Sprint Shims
QC0200	Bearing Pinion Carrier Bearing
QC0203	Pinion Race S/L Sprint
QC0815	Seal Rear Cover Gasket
QC0160	Bearing Pinion Nose Narrow



Tech Tip:

Illustrated is the difference in throw distance between Old Generation (left) and New Generation (right) shifter assembly.

New Generation Shifter Kits



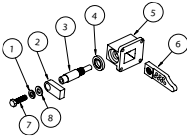
KTSP121

- 1.) SP0017
- 2.) SP1207
- 3.) SP1216

Sprint Input Shaft and Bearings NG*

Sprint Input Shaft Bearing
Sprint Input Shaft
Sprint Shifter Bushing-Oil

125.00



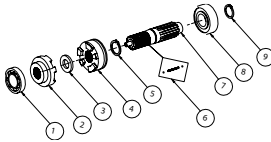
KTSP122

- 1.) QC0100
- 2.) SP0014
- 3.) SP1213A
- 4.) SP0012
- 5.) SP1211
- 6.) SP1215
- 7.) QC0104
- 8.) QC0101

Sprint Shifter Assembly NG*

3/8 Lock Washer
Sprint Shifter Link Aluminum
Sprint Shifter Shaft Aluminum
Sprint Shifter Seal
Sprint Shifter Housing - New Generation
Sprint Shifter Actuator - New Generation
3/8 x 24 x 3/4 Bolt
3/8 Flat Washer

115.00



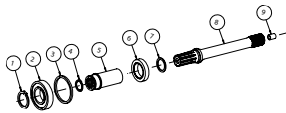
KTSP124

- 1.) SP1219
- 2.) SP1206
- 3 SP1205
- 4.) SP1209
- 5.) SP1238
- 6.) SP1220
- SP0020B
- 7.) SP1208
- 8.) SP0018
- 9.) SPW7658

Sprint Output Shaft Kit NG*

Sprint Output Center Bearing
Sprint Input Shifter Ring
Sprint Input Shifter Washer (Bronze)
Sprint Output Shifter Ring
Sprint Retaining Clip
Sprint D-Tent Spring
Sprint Roller Ball
Sprint Output Shaft
Sprint Output Shaft Bearing
Sprint Output Shaft Rear Snap Ring

220.00



KTSP124I

- 1.) SP0101-SR
- 2.) SP0017I
- 3.) SP0101SR
- 4.) SP0037-0
- 5.) SP0101L
- 6.) SP0101S
- 7.) SP0101-0
- 8.) SP1207I
- 9.) SP1216

Sprint Internal Conversion Kit NG*

Sprint Internal Coupler Snap Ring (Large)
Sprint Internal Coupler Bearing
Sprint Internal Spacer Ring
"O" Ring for Internal Coupler
Sprint Internal Coupler Steel
Sprint Internal Coupler Seal
Sprint Internal O-Ring
Sprint Input Shaft Internal
Sprint Shifter Bushing - Oil

171.00

KTSP124C

Sprint Output Shaft Kit Dog Ring Conversion

KTSP125

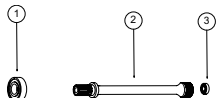
Sprint Ball Spline Kit

220.00

Frankland's New Generation dog tooth design makes the rear end virtually impossible to slip out of gear.

*New Generation

First Generation Shifter Kits



KTSP001

- 1.) SP0017
- 2.) SP0007
- 3.) SP0016

Sprint Input Shaft and Bearings

- Sprint Input Shaft Bearing
- Sprint Input Shaft
- Sprint Input Pilot Bearing

135.00

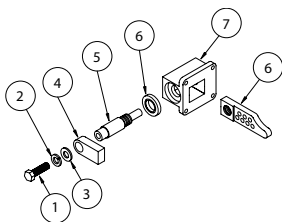
KTSP002

- 1.) QC0104
- 2.) QC0100
- 3.) QC0101
- 4.) SP0014
- 5.) SP0013
- 6.) SP0012
- 7.) SP0011
- 8.) SP0015

Sprint Shifter Assembly - FG*

- 3/8 x 24 x 3/4 Bolt
- 3/8 Lock Washer
- 3/8 Flat Washer
- Sprint Shifter Link Aluminum
- Sprint Shifter Shaft
- Sprint Shifter Housing Seal
- Sprint Shifter Housing
- Sprint Shifter Actuator

120.00



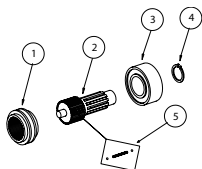
KTSP004

- 1.) SP0010
- 2.) SP0008
- 3.) SP0018
- 4.) SP0009
- 5.) SP0020B
- 6.) SP0020S

Sprint Output Shaft Kit - FG*

- Sprint Drive Coupler
- Sprint Lower Output Shaft
- Sprint Output Shaft Bearing
- Sprint Snap Ring Lower Output
- Sprint D-Tent Ball
- Sprint D-Tent Spring

115.80

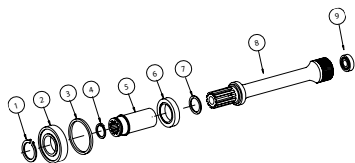


KTSP004I

- 1.) SP0101-SR
- 2.) SP0017I
- 3.) SP0101SR
- 4.) SP0037-0
- 5.) SP0101L
- 6.) SP0101S
- 7.) SP0101-0
- 8.) SP0007I
- 9.) SP0016

Sprint Internal Conversion Kit - FG* 192.00

- Internal Coupler Snap Ring Large
- Sprint Internal Coupler Bearing
- Sprint Internal Spacer Ring
- "O" Ring for Internal Coupler
- Sprint Internal Coupler Steel
- Sprint Internal Coupler Seal
- Sprint Internal O-Ring
- Sprint Input Shaft Internal Steel
- Sprint Input Pilot Bearing



* - First Generation

Pinion Assemblies

Superlite/Live Axle Assemblies

KT0355-214A	R&P Loaded 4:86 SL/SP (PICT)	395.00
1 QC0184	R&P 4:86 Spread Bearing	
1 QC0185	R&P 4:12 Spread Bearing	
2 QC0200	Bearing Pinion Carrier Bearing	
3 QC0203	Spread Bearing Pinion Race S/L and Sprint	
4 QC0214-A	Posi-Lock Pinion Nut S/L and Sprint	
5 QC0213	Pinion Nut S/L, SP and Frankland III	
6 QC0119	1/4-28 x 5/16 Half Daug Set Screw (Pinion)	
7 QC0206	Pinion Spacer	



Kits Include R&P, Bearings, Race, Posi-Lock Pinion Nut or Steel Pinion Nut with Spacer and Set Screws

KT0430	R&P Loaded 4:11 SL/SP	325.00
KT0430L	R&P Loaded 4:11 SL/SP LW	446.00

Original/Non-Quick Assemblies

KT0300	R&P Loaded 4:86 Original/Non-Quick (PICT)	395.00
1 QC0182	R&P 4:86 Original Timken Assembly	
2 QC0205	Bearing Pinion Assembly	
3 QC0220	Pinion Nut Washer	
4 QC0215-2	Posi-Lock Pinion Nut L.H. Original	



Kits Include R&P, Bearings, Race, Posi-Lock Pinion Nut or Steel Pinion Nut with Spacer and Set Screws

KT0400	R&P Loaded 4:11 Original/Non-Quick	395.00
--------	------------------------------------	--------

Frankland III Assemblies

KT0350	R&P Loaded 4:86 Frankland III (PICT)	345.00
1 QC0184	R&P 4.86 Spread Bearing	
2 QC0200	Bearing Pinion Carrier Bearing	
3 QC0190	Frankland III Carrier Race	
4 QC0195	Frankland III Pinion Carrier	
5 QC0206	Pinion Spacer	
6 QC0213	Pinion Nut Steel	
7 QC0119	1/4 - 28 x 5/16 Set Screw	



Kits Include R&P, Bearings, Race, Posi-Lock Pinion Nut or Steel Pinion Nut with Spacer and Set Screws

KT0425	R&P Loaded 4:11 Frankland III	345.00
--------	-------------------------------	--------



Ring and Pinions

Ring and Pinion

QC0182	4:86 R&P Original	321.00
QC0183	4:11 R&P Original	321.00
QC0184	4:86 R&P S/L Sprint	321.00
QC0185	4:11 R&P S/L Sprint	321.00
QC0185L	4:11 R&P S/L Sprint Frankland III Lightweight	369.00

Accessories

KT0450	Ring Gear Bolt Kit	18.50
QC0213	Pinion Nut Steel S/L and Sprint	17.50
QC0214A	Pinion Nut L.H. Spread Bearing	49.00
QC0215-2	Posi-Lock Pinion Nut L.H. Original	52.00
QC0160	Bearing Pinion Nose Narrow	9.50
QC0160HD	Bearing Pinion Nose Heavy Duty	26.00
QC0171	Bearing Pinion Nose Wide w/Snapping	26.00
QC0060	Pinion Lock Plate	13.50
QC0060A	Pinion Lock Plate Aluminum	24.00
RIC84-0010-1	Threaded Ring Gear Bolt Kit	33.50



QC0184



QC0185L



QC0214A



QC0060-QC0060A



QC0160



QC0160HD



QC0213



QC0171



QC0215-2

Rear Covers

Superlite and Live Axle Rear Cover

QC0840M	Superlite Rear Cover	100.00
QC0840MC	Superlite Rear Cover Thermal Coated	120.00

Superlite and Live Axle Rear Cover Kits

Includes Cover, Bearings, Pipe Plug, Cover Gasket and Set Screw

KT0840M-HD	Superlite Cover W/ Heavy Duty Bearings	135.00
KT0840M	Superlite Cover W/ Std. Bearings	110.00
KT0840MC	Superlite Cover W/ Std. Bearings Thermal Coated	130.00
KT0840MC-HD	Superlite Cover W/ Std. HD Bearings Thermal Coated	154.00
KT0840B	Superlite Cover Billet W/H.D. Bearings	175.00
KT0840BP	Superlite Cover Billet W/ Pump Mount	180.00

Kit Accessories

QC0090	Standard Rear Cover Bearing	11.50
QC0090HD	Heavy Duty Rear Cover Bearing	24.00
QC0321	Pipe Plug 3/8	.45
QC0815	Seal Rear Cover Gasket	3.00
QC0117	1/4-20 x5/16 Half Daug Set Screw	.60

Bolt Kits

KT0480	Superlite Cover Stud and Nut Kit	28.50
--------	----------------------------------	-------

Rear Cover Accessories

QC0815	Rear Cover Gasket	3.00
QC0321	Pipe Plug 3/8 Steel	.60
QC0321A	Pipe Plug 3/8 Aluminum	2.00
FEL2303	FelPro Rear Cover Gasket	15.00

Winters® Replacement Rear Cover and Accessories

QCW0840M	Winters® Superlite Rear Cover Replacement	100.00
QCW090	Winters® Rear Cover Bearing with Snap Ring	16.50
QCW090HD	Winters® Bearing Double Row Cover with Snap Ring	32.00



Rear Cover Bolt
Color Options



KT0480



QC0815



FEL2303

Rear Cover Kits

Original Rear Covers

QC0800	Original Cover Aluminum	130.00
QC0800M	Original Cover Magnesium	147.00
QC0830	Original Super Cover Aluminum	194.00
QC0830M	Original Super Cover Magnesium	225.00

Original Rear Cover Kits

Includes Cover, Bearings, Pipe Plug and Cover Gasket

KT0800	Original Aluminum Cover	147.00
KT0800M	Original Magnesium Cover	157.00
KT0830	Original Super Cover	172.50
KT0830M	Original Super Cover Magnesium	185.00

Kit Accessories

QC0090	Bearing Rear Cover	11.50
QC0091	Bearing Super Cover	25.00
QC0321	Pipe Plug 3/8	.60
QC0321A	Pipe Plug Aluminum 3/8	2.00
QC0815	Seal Rear Cover Gasket	3.00

Rear Cover Bolt Kits

KT0460	Original Rear Cover Bolt Kit	7.75
QC0114	3/8 x 16 x 4 Bolt	1.50
QC0101HD	3/8 Flat Washer Grade 9 Zinc	.45
QC0100	3/8 Lock Washer	.15
KT0465	Original Super Cover Bolt Kit	8.30
KT0470	Rear Cover Bolt Kit Frankland III	6.75
KT0475	Rear Super Cover Bolt Kit Frankland III	7.30



QCW0840-B



QC0840-B



QC0840MC



QC0840M

Premium Gears

Frankland Premium Gears

If you are looking for a gear you can count on Frankland's quality premium gears will be sure you are there at the finish line.



Straight Cut 118.00







Helical Cut 108.00



CL250-101BOX 7.35

Tech Tip:
Be sure to check rear cover nut torque after each heat cycle. (18 ft. bls)

SET NO.	TOOTH COUNT	4:11 	4:11 	4:86 	4:86 
1	27/27	4.11	4.11	4.86	4.86
1P	35/36	4.22	4.00	4.99	4.74
2W	27/28	4.26	3.96	5.04	4.69
5	22/23	4.31	3.92	5.09	4.64
15	19/20	4.33	3.90	5.12	4.62
26W	27/29	4.41	3.83	5.22	4.52
6W	22/24	4.47	3.78	5.28	4.47
25	19/21	4.54	3.72	5.37	4.40
12W	26/29	4.58	3.68	5.42	4.36
7	23/26	4.65	3.64	5.49	4.30
7Q	21/24	4.70	3.60	5.55	4.25
17	25/29	4.76	3.55	5.63	4.20
8Q	23/37	4.82	3.50	5.71	4.14
8	22/26	4.86	3.48	5.74	4.11
19	21/25	4.89	3.45	5.79	4.08
9Q	25/30	4.93	3.43	5.83	4.05
9	19/23	4.98	3.40	5.88	4.01
11W	22/27	5.04	3.35	5.96	3.96
3P	21/26	5.09	3.32	6.02	3.93
13	24/30	5.14	3.29	6.08	3.89
18	23/29	5.18	3.26	6.13	3.85
18Q	22/28	5.23	3.23	6.19	3.82
4Q	18/23	5.25	3.22	6.21	3.80
20Q	21/27	5.28	3.20	6.25	3.78
4	24/31	5.32	3.18	6.29	3.76
20	23/30	5.36	3.15	6.34	3.73
22	22/29	5.41	3.12	6.39	3.69
16	18/24	5.48	3.08	6.48	3.65
10	20/27	5.55	3.04	6.56	3.60
34	22/30	5.60	3.01	6.63	3.56
34Q	21/29	5.68	2.98	6.71	3.52
14	23/32	5.71	2.96	6.75	3.50
14Q	20/28	5.75	2.94	6.80	3.47
35	22/31	5.80	2.91	6.86	3.44
32	19/27	5.84	2.89	6.91	3.42
32Q	23/33	5.91	2.86	6.99	3.38
24	20/29	5.96	2.83	7.05	3.35
36	17/25	6.04	2.79	7.15	3.30
37	21/31	6.07	2.78	7.17	3.29
23	22/33	6.17	2.74	7.29	3.24
21	21/32	6.26	2.70	7.41	3.19
27P	15/23	6.29	2.69	7.43	3.18
27	20/31	6.37	2.65	7.53	3.14
43	16/25	6.42	2.63	7.59	3.11
28	19/30	6.46	2.60	7.67	3.08
28Q	22/35	6.53	2.59	7.72	3.06
29	20/32	6.58	2.57	7.78	3.04
39	18/27	6.62	2.55	7.83	3.02
30	16/26	6.68	2.53	7.90	2.99
40	19/31	6.71	2.52	7.93	2.98
41	20/33	6.77	2.50	8.00	2.95
31	18/30	6.85	2.47	8.10	2.92
33Q	19/32	6.94	2.44	8.20	2.88
33W	20/34	6.99	2.42	8.26	2.86
30A	15/26	7.12	2.37	8.42	2.80
50Q	16/28	7.19	2.35	8.51	2.78
51Q	17/30	7.25	2.33	8.58	2.75
52Q	18/32	7.31	2.31	8.64	2.73
53Q	14/25	7.34	2.30	8.68	2.72
54Q	15/27	7.40	2.28	8.75	2.70
55Q	16/29	7.45	2.27	8.81	2.68
57Q	16/30	7.71	2.19	9.11	2.59

Economy Gears

SET NO.	TOOTH COUNT	4:11	4:11	4:86	4:86
1000	27/27	4.11	4.11	4.86	4.86
1037	27/28	4.26	3.96	5.04	4.67
1042	22/23	4.28	3.95	5.06	4.67
1053	19/20	4.33	3.90	5.12	4.62
1074	27/29	4.41	3.83	5.22	4.52
1087	22/24	4.47	3.78	5.28	4.47
1100	19/21	4.52	3.74	5.35	4.42
1115	26/29	4.58	3.68	5.42	4.36
1130	23/26	4.65	3.64	5.49	4.30
1143	21/24	4.70	3.60	5.55	4.25
1160	25/29	4.77	3.54	5.64	4.19
1174	23/27	4.82	3.50	5.71	4.14
1182	22/26	4.86	3.48	5.74	4.11
1190	21/25	4.89	3.45	5.79	4.08
1200	25/30	4.93	3.43	5.83	4.05
1211	19/23	4.98	3.40	5.88	4.01
1227	22/27	5.04	3.35	5.96	3.96
1239	21/26	5.09	3.32	6.02	3.93
1250	24/30	5.14	3.29	6.08	3.89
1261	23/29	5.18	3.26	6.13	3.85
1273	22/28	5.23	3.23	6.19	3.82
1278	18/23	5.25	3.22	6.21	3.80
1286	21/27	5.28	3.20	6.25	3.78
1292	24/31	5.31	3.18	6.28	3.76
1304	23/30	5.34	3.16	6.31	3.74
1316	22/29	5.41	3.12	6.39	3.69
1333	18/24	5.48	3.08	6.48	3.65
1350	20/27	5.56	3.04	6.58	3.59
1364	22/30	5.60	3.01	6.63	3.56
1381	21/29	5.68	2.98	6.71	3.52
1391	23/32	5.72	2.95	6.76	3.49
1400	20/28	5.75	2.94	6.80	3.47
1412	22/31	5.80	2.91	6.86	3.44
1421	19/27	5.84	2.89	6.91	3.42
1438	23/33	5.91	2.86	6.99	3.38
1450	20/29	5.96	2.83	7.05	3.35
1471	17/25	6.04	2.79	7.015	3.30
1476	21/31	6.07	2.75	7.17	3.29
1500	22/33	6.17	2.74	7.29	3.24
1524	21/32	6.26	2.70	7.41	3.19
1533	15/23	6.30	2.68	7.45	3.17
1550	20/31	6.35	2.66	7.51	3.14
1563	16/25	6.42	2.63	7.59	3.11
1579	19/30	6.49	2.60	7.67	3.08
1588	22/35	6.53	2.59	7.72	3.06
1600	20/32	6.58	2.57	7.78	3.04
1611	18/29	6.62	2.55	7.83	3.02
1625	16/26	6.68	2.53	7.90	2.99
1632	19/31	6.71	2.52	7.93	2.98
1647	20/33	6.77	2.50	8.00	2.95
1666	18/30	6.85	2.47	8.10	2.92
1688	19/32	6.94	2.44	8.20	2.88
1700	20/34	6.99	2.42	8.26	2.86
1714	14/24	7.05	2.40	8.33	2.83
1733	15/26	7.12	2.37	8.442	2.80

Frankland Economy Gears 75.00

Made out of 8620 material recommend application under 500 H.P.



Tech Tip:

Checking your oil level is **CRITICAL**. Too much gear oil is as detrimental to the life of your rear end as having too little. The proper fill level is found by filling to the pipe plug in the rear cover and right side bell.

Oil coolers are recommended in road course circuits and oval track applications that run in excess of 100 laps.

Miscellaneous Parts

KT0500	Troubleshooter Kit	47.00
QC5000	Troubleshooter Adapter	14.00
QC5001	Troubleshooter Dial Indicator	32.50
QC5002	Troubleshooter Bracket	5.00



KT0500

Frankland Warranty

With Frankland's goal of providing the best product at affordable prices, they continue to guarantee all Frankland manufactured center sections (including Winters Replacement center sections). Frankland will cover any crack or break in the center no matter what the cause. The guarantee will remain effective for one year from the date of purchase.

Winters Replacement

Why Buy Winters® Parts From Frankland:

- Winters® Replacement Center has a one year unconditional guarantee
- Frankland manufactures and machines all of the Winters® Replacement parts with the same quality of their own.
- Frankland's fast, friendly and dependable service

Replacement Parts for Closed Tube

QCW0014M	Winters® Replacement Center Section	470.00
QCW0215-2	Winters® Pinion Posi-Lock for Frankland RT Hand Thread	32.00
QCW0840M	Winters® Superlite Rear Cover Replacement	100.00
QCW090	Winters® Rear Cover Bearing with Snap Ring	16.50
QCW090HD	Winters® Bearing Double Row Cover with Snap Ring	32.00
QCW290	Winters® Carrier Bearing	30.00

Kits

KTW0840M	Winters® Replacement Rear Cover	120.00
KTW0840M-HD	Winters® Replacement Rear Cover w/ HD Bearings	140.00
KTW0432	Winters® Replacement Spool w/ Bearings	280.00

Replacement Parts For Open Tube

SPW0014M	Winters® Replacement Center	545.00
SPW00253M	Winters® Replacement Side Bell	215.00
SPW0005	Winters® Bell Seal	10.50
SPW0007	Winters® Sprint Input Replacement Shaft	98.00
SPW0007I	Winters® Sprint Input Replacement Shaft Internal	92.00
SPW0008	Winters® Stub Shaft	82.00
SPW7242	Winters® Internal Seal	14.36
SPW7403	Winters® Bell O Ring	9.50

Kits

KTSPW0014M	Winters® Replacement Center Kit	495.00
KTSPW00253M	Winters® Sprint Side Bell Conversion Kit	245.00
KTSPW001	Winters® Replacement External Shaft Kit	118.00
KTSPW004I	Winters® Internal Conversion Kit	161.00
KTW0840B	Winters® Billett Rear Cover Replacement With Bearings	175.00



QCW0840-B

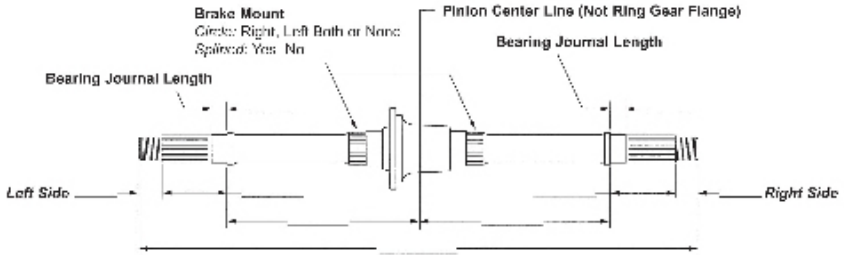


SPW0014



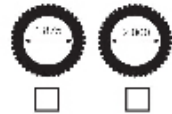
KTSPW0014M

Axle Set-up



All axles will be made out of aluminum.

Quantity _____



Please read and complete the above information carefully. There are various dimensions needed to build an axle. It is essential that we are given the correct information to build your axle properly. Follow the four step process below to insure all blanks are complete.

1. Please verify above information and fill in the blanks.
2. Circle the correct side for brake mount - Left, Right, Both or None. Indicate whether mount is splined or not
3. Mark desired bore.
4. Sign, date and return this form by FAX (724) 898-3250 or mail to Frankland.

Customer Name: _____ Customer No: _____

Address: _____

City/State: _____ Zip Code: _____

Phone: _____ Fax: _____ Email: _____

Signature: _____ Date: _____

Note: Custom Axles are built to your specification and require a 50% deposit.

Four Step Maintenance

The term maintenance is derived from the word maintain which means to remain unaltered. It's a well known fact that no component on a race car will remain unaltered unless it never leaves the garage, but if you would like to extend the life expectancy of your rear end unit, a regular maintenance schedule is vital.

First - Which lubricate will work best for your application? "Free, Right" No, not always, if your rear end is reaching temperatures in excess of 220 degrees a standard gear lube (meaning non synthetic) is no longer doing the job it needs to. In this case, we recommend using a 80W140 synthetic gear lube such as Mobile One. These lubricants will provide you with cooler running temperatures and better bearing life.

Second - How often does the lubricant need changed? Frankland recommends completely draining and replenishing your rear with fresh oil every 200 laps, Frankland does not recommend reusing contaminated oil. When filling, be sure oil has leveled in both the front and rear cavities of your quick change unit. If you are not sure how much oil your particular unit holds, typically a fill level can be found in the right side bell and the rear cover.

Third - How often do the ring and pinion and bearings need visually inspected? In most applications you would remove the left side bell after 850 laps to clean any sediments which may have settled to the bottom of the unit. Visually inspect the ring and pinion, differential splines, gears, and bearings. Look for scoring, hot spots, and bearing flake. Every time the rear cover is removed; inspect the cover bearings and gasket. Make sure both rear shafts do not have any unusual movement. Contact the Technical Department at Frankland to receive setup procedures, back lash settings and torque specs for your particular unit.

Fourth - The final step in a good maintenance program is accurate record keeping. Write it down , make a check list, do what it takes to make sure your team is in the running when the checkered flag drops.

Setup Specs

Set-Up Specs

Pinion Pre-Load 5-10 Inch Lbs.
Total Pre Load 30-40 Inch Lbs.
Backlash .006-.010

Note: All set up specs are taken from the pinion. To make set up easy, Frankland Racing sells a Trouble Shooter Kit (K). It comes with a pinion adapter, dial indicator, and mounting bracket. When ordering, please specify the model of the rear you have.

Helpful Hints on Set Up

(1) Purchase a set of set up carrier bearings. The bearings are honed so they can slide on and off your differential making your set up time much faster. **Part# QC0289.**

(2) When setting pre-load and backlash, set up the pre-load first.

(3) Start with an excessive amount of shims on the backlash side (right side) of the differential. This is to prevent a false pre-load reading. A false pre-load reading will occur if there is negative backlash (Negative backlash means that the ring & pinion gears are crushed against each other). Once you have an excessive amount of backlash, continue adding or subtracting shims to the left side of the differential until 30-40 inch lbs. is achieved.

(4) Once the pre-load is set, start setting the backlash by moving shims from the right side to the left side until .006-.010 of backlash is reached.

While the rear is out of the car and taken apart, inspect all seals and bearings for wear.

Torque Specs for Bolts

3/8" Bolts 30 foot lbs.
7/16" bolts 40 foot lbs.

Loaded Pinion Removal

Heat area around the pinion until old pinion unit taps out easily.

Loaded pinion Installation

Heat the pinion area of the center until loaded ring and pinion drops in easily. Never concentrate heat around the pinion nose bearing.

If you have any problems please call our tech line (724) 898-2111.

Why go Billet



A Billet Rear Cover is helpful in reducing the wear of the gears because it is stronger and has less deflection than a magnesium cover.

Understanding Thermal Coatings

After testing with some of the top teams in both Dirt Late Model and Outlaw Sprint Car Racing, Frankland Racing Supply offers a heat dissipating coating that really works.

Teams have reported a temperature reduction of 20 to 30 degrees even after a 100 lap race when used with a quality synthetic gear lube, such as Lucas Oil. This is especially important in rears using a gear driven differential.

With the rear being coated on the inside this acts as an oil shedding agent to keep the gear lube level where it needs to be to insure lubrication. This glossy black coating enhances the look of your Frankland Rear. This also helps to protect the magnesium center from harsh chemicals used in track preparation and cleaning your race car.

Frankland also offers a dry film lubricant coating from Calico Coatings for your Ring and Pinion and quick change gears to reduce friction and heat, both of which are power robbers.



Tech Tips

1. A good "rule of thumb" method for turning your gearing to the desired RPM is this example:

Joe Racer is turning the engine 6000RPM at the end of the straight away, he would like to turn at 6800 at the end of the straight, now he is running a final drive of 5.04. Work the math this way:

$6800 / 6000 = 1.13$
 $1.13 \times 5.04 = 5.70$
5.7 would be the gear of choice.

2. If you break a set of quickchange gears, you must check the lowershaft for runout. 3 thousands is maximum.

3. In the heat of action at the race track, everybody always overtightens the rear cover bolts, the proper torque is 18 ft. lbs. for an original. 25 ft. lbs. if you torque a cover using a stud and nut.

4. Formula to Compute Final Drive

If apart:

Small gear teeth number divides large gear teeth number equal spur ratio times ring & pinion equals final drive.

Example Set Number 18: $29 \div 23 = 1.263 \times 4.86 = 6.13$
 $\frac{\text{Ratio} \times \text{MPH}}{\text{Tire Dia.}} \times 336 = \text{RPM}$ $\frac{\text{RPM} \times \text{Tire Dia.}}{\text{MPH} \times 336} = \text{Ratio}$

If Together:

Mark tire and pinion.

Turn pinion approximately 4.1 turns to 1 turn on the tire = 4:11

Turn pinion approximately 4.9 turns to 1 tire turn = 4:86

5. Beware of the claims by some of the advantages of a so-called light-weight spool. A spool with holes drilled for lightness causes foaming in the gear lube and also adds tremendous drag on the engine.

6. All quickchange gears are matched sets. Never mix them with a gear from another set.

7. It is recommended that you always use at least 3/8 inch breather line on the top of the rear. Run that line up as far as possible and top it with a good breather filter, like a K&N or the equivalent.

8. About once a month, it is good idea to remove your rear cover and use a long, flat aluminum file clean up both edges of the mating surface. This will insure a clean, flat mating surface and guard against leaks.



The Dirt Diecast People!

ADC IS DEDICATED TO DEVELOPING, CREATING, AND BUILDING THE MOST DETAILED AND HIGHEST QUALITY DIRT LATE MODEL & DIRT MODIFIED DIECAST CARS IN THE WORLD.

**GREAT FOR SPONSOR AND PIT CREW GIFTS,
OR JUST TO SELL AT THE TRACK!**

shortrun Program

1:64 Scale Pricing

25+ \$10.50 per car
100+ \$ 9.50 per car

1:34 Scale Pricing

1-2 \$95.00 per car
3-11 \$75.00 per car
12-23 \$55.00 per car
24-47 \$50.00 per car
48+ \$48.00 per car

Color Options

Body	Chassis
White	Grey
Black	Black
Red	Red
Blue	Blue
Orange	Orange
Yellow	
Purple	Purple

- ADC requires a \$75.00 deposit to begin tooling process.
- Half of the total order is due with prepayment of 50%.
- After approval and deposit are received, it takes approximately 4-6 weeks to fabricate the product.
- Additional fees may apply for custom artwork.

